

58th WORLD CONGRESS OF CHESS COMPOSITION
Ostroda, Poland **August 1st – 8th, 2015**

13th Romanian Tzuica Tourney
Judges: Vlaicu Crişan & Eric Huber (Romania)

Theme: Help-selfmates (**hs#n**) with **at least two solutions featuring pin mates.**

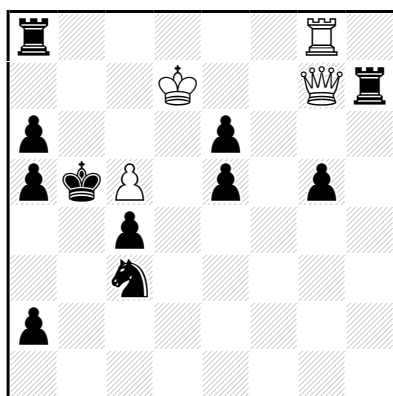
Please take in consideration the following **definitions:**

1. In a **help-selfmate** problem in 'n' moves (denoted **hs#n**), White starts and Black collaborates with White in order to reach a position of **s#1** (selfmate in one move) at move 'n' (the last move).
2. **Pin:** A piece is pinned if, not being on the board, its King could be captured by a piece which cannot do it because the pinned piece is there.
3. **Pin mate** in helpselfmate: a white piece is **pinned during the solution** and the pin is needed for the mate.

All fairy pieces and conditions are accepted, provided that the problem is checked by a known solving program.

Example 1 for Orthodox section

Bo LINDGREN
6th HM, feenschach 1991



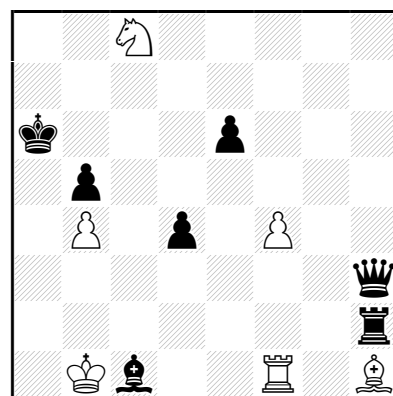
hs#4 3.1.1... (4 + 11)

- 1.Rb8+ Kxc5 2.Kc8 Sd5 3.Qb7 Rd7 4.Qb6+ Sxb6#
 1.Rc8 Sd5 2.Kd8 Sb4 3.Qc7 Re7 4.Qc6+ Sxc6#
 1.Rd8 Kxc5 2.Ke8 Sb5 3.Qd7 Rf7 4.Qd6+ Sxd6#

In each solution, the white Rook is pinned by bRa8 and cannot capture the bS.

Example 2 for Fairy Section

Nikola PREDRAG
7th Prize, Julia's Fairies TT1 2012



hs#3 2.1.1.1.1.1 (6 + 7)
 Anticirce

- 1.Bb7 Bxf4(Bf8) 2.Kc1 Bh6+ 3.Rf8+ Qf1#
 (wRf8 is pinned by bBh6)

- 1.Rxc1(Ra1) d3 2.Ra2 Rb2+ 3.Ba8+ Qh1#
 (wBa8 is pinned by bRb2)

Prizes in bottles of Tzuica

The tourney is open worldwide, however the prizes are for congress participants only.

Please send entries to Eric Huber by e-mail at hubereric@yahoo.fr until August 2nd, or during Congress to the Romanian delegate Dinu-Ioan Nicula until Wednesday, August 5th, 8 p.m.